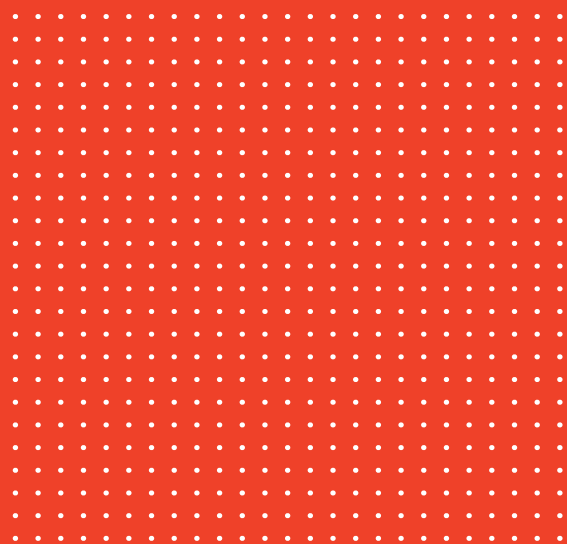
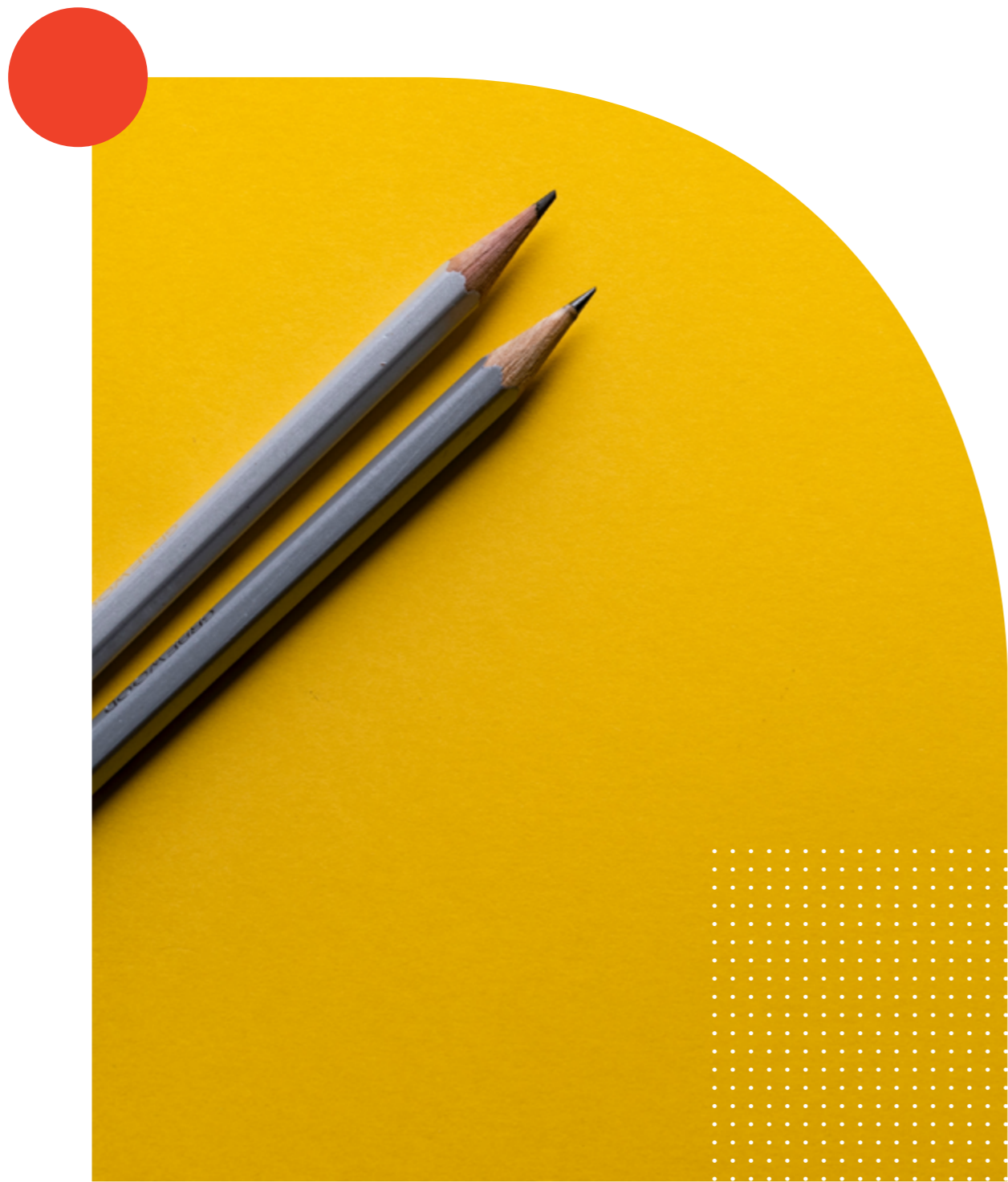


Language
Cert



The Next Generation
of English Language
Qualifications





LanguageCert Key facts

- > Ofqual regulated qualifications
- > 100% CEFR aligned secure and reliable exams
- > Secure and reliable exams
- > Candidate-friendly, innovative and flexible exam delivery
- > Fast exam turnaround from booking to certification
- > Online Certificate verification

Who we are

LanguageCert is an Ofqual recognised Awarding Organisation dedicated to language skills assessment and certification, aiming to provide exceptional language qualifications. It is a UK-based company of PeopleCert Group.

We develop and deliver English language exams that are both reliable and accessible. Our candidates are individuals from around the world who need to certify their English language skills for education, immigration or professional purposes. We also serve those who support them and who rely on test scores to make important informed decisions. Using our expertise in exam development and delivery, our aim is to best meet our candidates' needs in a rapidly evolving world.

LanguageCert International ESOL exams

LanguageCert International ESOL exams assess applied language skills needed to succeed within academic and professional communities where the English language is used. They are available at six levels, A1 to C2, corresponding to the Common European Framework of Reference (CEFR). Written and Spoken exams are available at each level and can be taken together or independently of each other at the candidates' convenience.

LanguageCert International ESOL Written Exam (Listening, Reading, Writing)

LanguageCert International ESOL Spoken Exam (Speaking)

Candidates register for the level they need or are ready to take, and the corresponding certificates are awarded upon passing the exams.

Out of the six levels, the following four are the ones usually required and accepted by educational institutions, government and private organisations.

LanguageCert International ESOL		B1 Achiever Entry Level 3
Duration	2hrs 10 min (R&W) + 10' for final check	
Listening	30 min all parts heard twice 4 parts – 26 Questions	
Reading	4 parts – 26 Questions	
Writing	2 Tasks	
Speaking	12 minutes – 4 parts	

LanguageCert International ESOL		B2 Communicator Level 1
Duration	2hrs 10 min (R&W) + 10' for final check	
Listening	30 min all parts heard twice 4 parts – 26 Questions	
Reading	4 parts – 26 Questions	
Writing	2 Tasks	
Speaking	13 minutes – 4 parts	

LanguageCert International ESOL		C1 Expert Level 2
Duration	2hrs 40 min (R&W) + 10' for final check	
Listening	30 min all parts heard twice 4 parts – 26 Questions	
Reading	4 parts – 26 Questions	
Writing	2 Tasks	
Speaking	15 minutes – 4 parts	

LanguageCert International ESOL		C2 Mastery Level 3
Duration	2hrs 10 min (R&W) + 10' for final check	
Listening	30 min all parts heard twice 4 parts – 26 Questions	
Reading	4 parts – 26 Questions	
Writing	2 Tasks	
Speaking	17 minutes – 4 parts	

Full details on task types, skills assessed, and timings can be found in our Qualification Handbooks available on languagecert.org.

Secure, reliable and accessible exams

Online exams with live invigilation

We believe in making examinations accessible without compromising on security and reliability, to enable candidates to take their exam in locations with limited access to Test Centres or where exam dates are infrequent. LanguageCert offers high-stakes exams that meet world-class academic and security requirements so that every certificate we issue carries real value and reflects the candidate's real-life language skills.

LanguageCert International ESOL exams can be taken online anytime, from any location that offers a quiet room without distractions, as well as a computer, a webcam and internet connection. The Online Invigilator (Proctor) identifies the candidate via a secure ID process and ensures that the testing environment is as secure as in classroom exams.

LanguageCert Online exams offer flexibility to candidates and language schools and allow online course providers to combine their language courses with online exams. Instructions how to book for online exams with live invigilation, including exam fees, can be found on [languagecert.org](https://www.languagecert.org).

Exams at LanguageCert Approved Test Centres

For candidates who seek support with their language learning, exam preparation and exam registration, we work with LanguageCert Approved Test Centres in over 50 countries that offer a range of services and options. Exams are available on demand, in paper and computer-based formats.

All details of the LanguageCert Approved Test Centre network are available on [languagecert.org](https://www.languagecert.org).

Exam security

LanguageCert International ESOL exams are used to provide evidence for high-stakes purposes, including university admissions. As an Awarding Organisation specialising in the delivery of Ofqual-regulated exams worldwide, we place a lot of emphasis on exam security and continually work to ensure we apply effective and reliable security measures. Some of these measures are outlined below, and further details are available on our website or by contacting us directly.

Security of Online Exams with live invigilation

Online exams are conducted without the need for an invigilator being physically present at the candidate's location. The invigilator conducts the session online, with all the required ID and security checks and monitors the candidate throughout the process. This is done using ExamShield, our secure software which locks down the candidate's browser to mitigate content theft and cheating, and our own monitoring software. Using our monitoring and communication software, invigilators can communicate with candidates and identify incongruous activity including multiple voice and face detection, background noises and irregular movement. Further information about the security of Online Exams with live invigilation is available on request.

Security at the Test Centres

For an organisation to administer LanguageCert exams, it must be a LanguageCert Approved Test Centre. LanguageCert determines whether the centre can conduct the exams in a secure and controlled manner. To facilitate the delivery of LanguageCert exams, LanguageCert Approved Test Centres are provided with targeted training and support to ensure they are fully prepared for secure exam delivery. Test Centre staff are trained to perform exam delivery tasks based on their role (e.g. Test Centre Manager, Invigilator and Interlocutor). The training ensures that each LanguageCert Approved Test Centre and its designated personnel have a thorough understanding of their roles, as well as the exam registration and delivery processes.

LanguageCert has a dedicated Quality team managing test centre audits. The audit activities cover all aspects of test centre performance and monitors compliance with organisational and regulatory requirements. Activities include onsite planned audits, unannounced audits on exam days, and remote audits. We also conduct regular statistical analysis of exam results to monitor any irregularities.



LanguageCert International ESOL and the CEFR

Our International ESOL exams have been designed to reference the descriptions of language proficiency in the Common European Framework Reference for Languages, using the Council of Europe's manual 'Relating Language Examinations to the Common European Framework of Reference for Languages: Learning, Teaching, Assessment (CEFR).'

LanguageCert International ESOL qualifications have successfully undergone independent, external validation by the following organisations to ensure appropriate CEFR alignment.

UKNARIC | the designated UK national agency for the recognition and comparison of International qualifications and skills – validated in 2019

CRELLA | Centre for Research in English Language Learning and Assessment – validated in 2018.

CEFR	LanguageCert International ESOL	Cambridge	Pearson PTE Academic	IELTS	TOEFL IBT	Trinity GESE
C2	C2 Mastery	Proficiency	85 - 90	8.5 - 9.0	95 - 120	ISE IV
C1	C1 Expert	Advanced	76 - 84	7.0 - 8.0		ISE III
B2	B2 Communicator	First	59 - 75	5.5 - 6.5	72 - 94	ISE II
B1	B1 Achiever	Preliminary	43 - 58	4.0 - 5.0	42 - 71	ISE I
A2	A2 Access	Key	30 - 42			ISE Foundation
A1	A1 Preliminary		22 - 29			

Valid as of Oct. 2018 review

LanguageCert recommends the below benchmarking against IELTS:

IELTS	LanguageCert International ESOL
9.0	C2 Mastery High Pass
8.5	C2 Mastery Pass
8.0	C1 Expert High Pass
7.0 – 7.5	C1 Expert Pass
6.5	B2 Communicator High Pass
5.5 – 6.0	B2 Communicator Pass

Score comparison information in both tables are meant to act as guidelines and recommendations only.

How exams are marked

Exam marking is undertaken by LanguageCert to ensure and assure the highest standards of security, validity and reliability. This applies to both the Written and the Spoken exams.

LanguageCert's marking team are selected, appointed, regularly trained and strictly monitored by LanguageCert's Chief Examiners. Markers view and assess scripts or exam items on screen, and enter the mark given for a question directly into the Marking Application. Security and objectivity are further enhanced, as markers are unable to view candidate details since the scripts or answers to the exam items they view remain anonymous.

LanguageCert uses a secure, state-of-the-art proprietary fully integrated exam management platform and application for the marking of all exams. This application supports:

- automatic marking of objectively assessed items (multiple choice questions)
- LanguageCert's marking team to manage the assessment process
- quantitative monitoring tools to ensure standards are maintained
- remote script and audio assessment by trained markers
- operational and quality assurance processes (e.g. monitoring of marker performance, marker availability, script allocation)

Interlocutors are appointed to conduct the oral part of the exams. They do not mark or evaluate the performance of the candidates. They are only responsible for managing the interaction with the candidates to facilitate the exam and for recording the examination session. All Interlocutors must be approved by LanguageCert. The recording of Spoken exams ensures objectivity but also provides the capability for remarking.

Fast results

Results are available in as few as 3 business days after an online exam or up to a maximum of 10 business days for exams taken at a LanguageCert Approved Test Centre.

Candidates receive their results electronically via email and through their online account, with a hard-copy certificate sent by mail (if a Pass is achieved). Candidates receive separate results and certificates for both the Written exam (Listening, Reading, Writing) and the Spoken exam (Speaking) for the level they have been tested on.

Unsuccessful candidates automatically receive a short feedback report designed to provide insights on points they need to improve on before they resit their exam.

Online Certificate Verification

To ensure the authenticity of exam results and certificates, LanguageCert offers an Online Certificate Verification service where third parties (such as employers or universities) can verify certificate validity via LanguageCert's website.

- There is no time limit on how long institutions are able to verify results
- Results are instantly available, there is no waiting time
- No registration is required

LanguageCert – global reach and recognition

LanguageCert qualifications are recognised by hundreds of higher education institutions globally and accepted for admission purposes and graduation requirements as defined by each institution. For the most up-to-date list visit [languagecert.org/recognition](https://www.languagecert.org/recognition).

They are also recognised by Ministries of Education and government authorities in the following countries:

- United Kingdom
- Hungary
- New Zealand
- Czech Republic
- Italy
- Romania
- Greece
- Lithuania
- Spain (ACLES, CRUE, Regional Governments)
- Thailand

In addition, LanguageCert also holds membership with the following prestigious organisations:

- ALTE – Association of Language Testers in Europe
- EAQUALS – European Association for Quality Language Services
- BAC – British Accreditation Council
- FAB – UK Federation of Awarding Bodies
- EALTA – European Association for Language Testing and Assessment
- IEAA – International Education Association of Australia

Why institutions accept LanguageCert International ESOL qualifications

• Student recruitment with greater exam accessibility

With LanguageCert online exams with live invigilation service, students can take a secure and reliable English language exam anytime, from their preferred location. This makes the process easier for students by eliminating lengthy waiting times and expensive travel costs. Institutions also have the option to purchase and include exam vouchers in their marketing and recruitment activities to encourage student engagement.

• Accelerated offer turnaround with fast, securely verified results

With our quick turnaround on results (as few as 3 business days), students can complete their application requirements faster enabling you to finalise offers more efficiently.

• Trust in total external assessment and enhanced security measures

LanguageCert offers the best of both worlds with accessible online testing whilst using live online exam personnel who are regularly trained and standardised to ensure consistency and objectivity of assessment. This, along with LanguageCert's use of award-winning technologies that enable high security measures, provides institutions with trust and confidence in student identity and results.

• Relevant, holistic communication skills assessment

The exam tasks are sufficiently universal to suit all language learning styles and preparation methods, with exam content authentically replicating real-life English use. Although general preparation resources are available to students, students are not 'taught to the exam', providing institutions with more confidence that students will be able to communicate effectively in an academic environment.



LanguageCert SELT (Secure English Language Tests)

LanguageCert is a UKVI approved provider of Secure English Language Test (SELT) exams globally. If candidates need to take a SELT to meet UK visa application requirements, they can do so at one of our SELT test centres worldwide, which meet specific security requirements. For more information about LanguageCert SELTs, visit [languagecert.org](https://www.languagecert.org).

COMING
SOON!



Other Languages

LanguageCert partners with prominent institutions worldwide to offer high quality qualifications in languages other than English. Spanish language qualifications LanguageCert USAL esPro are offered in partnership with the University of Salamanca 'Cursos Internacionales' and Turkish language qualifications LanguageCert AÜ TÖMER TürkYet are offered in partnership with the University of Ankara 'Tömer'.



About PeopleCert

PeopleCert is a global leader in the assessment and certification of professional skills, partnering with multinational organisations and government bodies to develop and deliver market leading exams. PeopleCert delivers exams across 200 countries through its state-of-the-art assessment technology, enabling professionals to reach their full potential and realise their life ambitions through learning.



© LanguageCert 2020

